



The Aspen Institute is a global nonprofit organization committed to realizing a free, just, and equitable society.

Founded in 1949, the Institute drives change through dialogue, leadership, and action to help solve the most important challenges facing the United States and the world.

[AspenInstitute.org](https://www.AspenInstitute.org)



A Catalyst for Community Engagement & Regional Collaboration
Serving the Roaring Fork and Colorado River Valleys



Flagship Program: HURST LEADERS FORUM

Convening Local Elected Officials & Non-Elected Community Leaders in Values-Based Seminars
Designed to Build Trust, Strengthen Relationships & Promote Collaboration



Since 2020, the Hurst Leaders Forum has hosted

- 75+ Regional Participants, including
- 50+ Non-Elected Community Leaders &
- 25+ Elected Officials

Representing

- 14 Municipalities
- 37 Nonprofit Organizations
- 4 School District Boards
- 3 Counties (Pitkin, Eagle & Garfield)



A Catalyst for Community Engagement & Regional Collaboration

Taking a *Holistic* Approach to Collective Impact: 4-Part Project Portfolio

Economies are strongest when they're diverse, responsive to the needs of the local community, and built on a wide variety of industries – where everyone has the opportunity to participate fully, pursue upward mobility, and benefit equitably.

Economic
Vitality

Social Emotional
Resilience

Socially emotionally resilient communities enjoy equitable access to food and housing security, social services that support physical and mental health, vibrant natural ecosystems, professional development, and belonging.

Housing stability starts with innovative solutions to affordability, inventory, financing, and equitable access to building generational wealth for individuals across the continuum of permanent housing to homelessness.

Housing
Stability

Disaster Prep
& Response

In small communities, when something goes wrong, everyone shows up to help. Partnering with a wide range of public and private partners, we're helping to prevent, prepare for, respond to, and recover from any disaster in the tri-county area.



WEST MOUNTAIN REGIONAL
HOUSING
COALITION





Methodology & Process

An Iterative Approach to Collective Impact

#1 STRENGTHEN RELATIONSHIPS

- Identify Local Stakeholders
 - Establish Common Ground
 - Prioritize Opportunities
- ✓ Hurst Leaders Seminar & Alumni Reunion Retreats
 - ✓ Community Coalition Meetings
 - ✓ 1-on-1 Interviews, Community Outreach & Focus Groups

#2 SHARE EXPERTISE

- Recruit Diverse Local Partners & Regional Experts
 - Invite Aspen Institute Content-Experts & Programming
 - Identify Industry-Standards & Best Practices
- ✓ Extensive Community Networking
 - ✓ Aspen Institute Policy Program Partners
 - ✓ Aspen Institute-Hosted Events
 - ✓ Newsletters, Reports & Published Projects

#3 CONVENE LOCAL STAKEHOLDERS

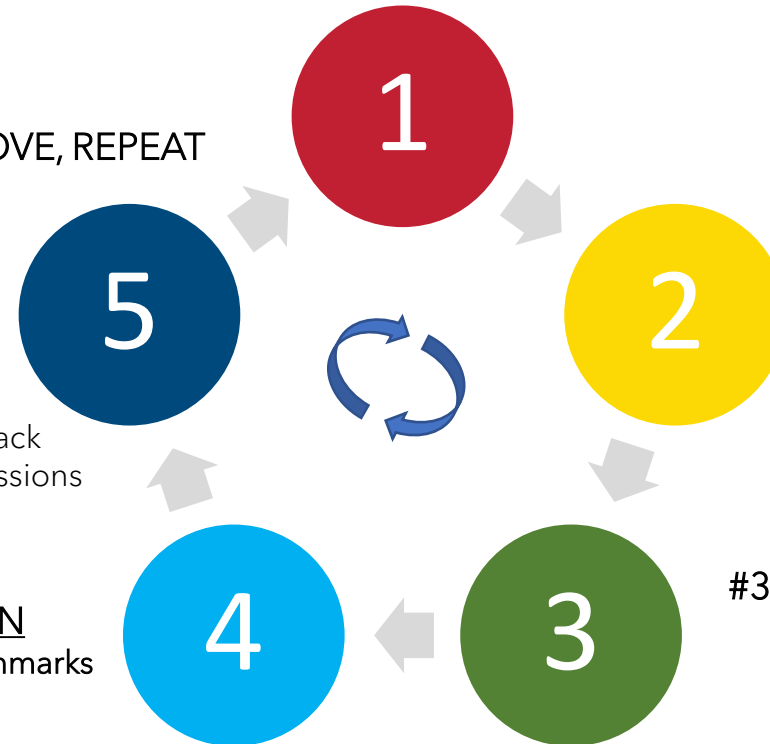
- Identify Assets and Resources
 - Brainstorm Collaborative Solutions
 - Strategize Agreements & Team Approach
 - Define Goals, Success & Measurable Outcomes
- ✓ Community Asset Mapping
 - ✓ Interviews, Focus Groups & Coalition Meetings
 - ✓ Coalition & Subcommittee Strategy Sessions

#4 RALLY COMMUNITY IMPLEMENTATION

- Help Coordinate Assignments & Benchmarks
 - Set Timely Check-Ins & Status Updates
 - Trouble-Shoot Barriers to Success
- ✓ Coalition & Subcommittee Strategy Meetings
 - ✓ Trello (Online Task Lists), Meetings & Report-Outs
 - ✓ Coalition & Subcommittee Strategy Sessions

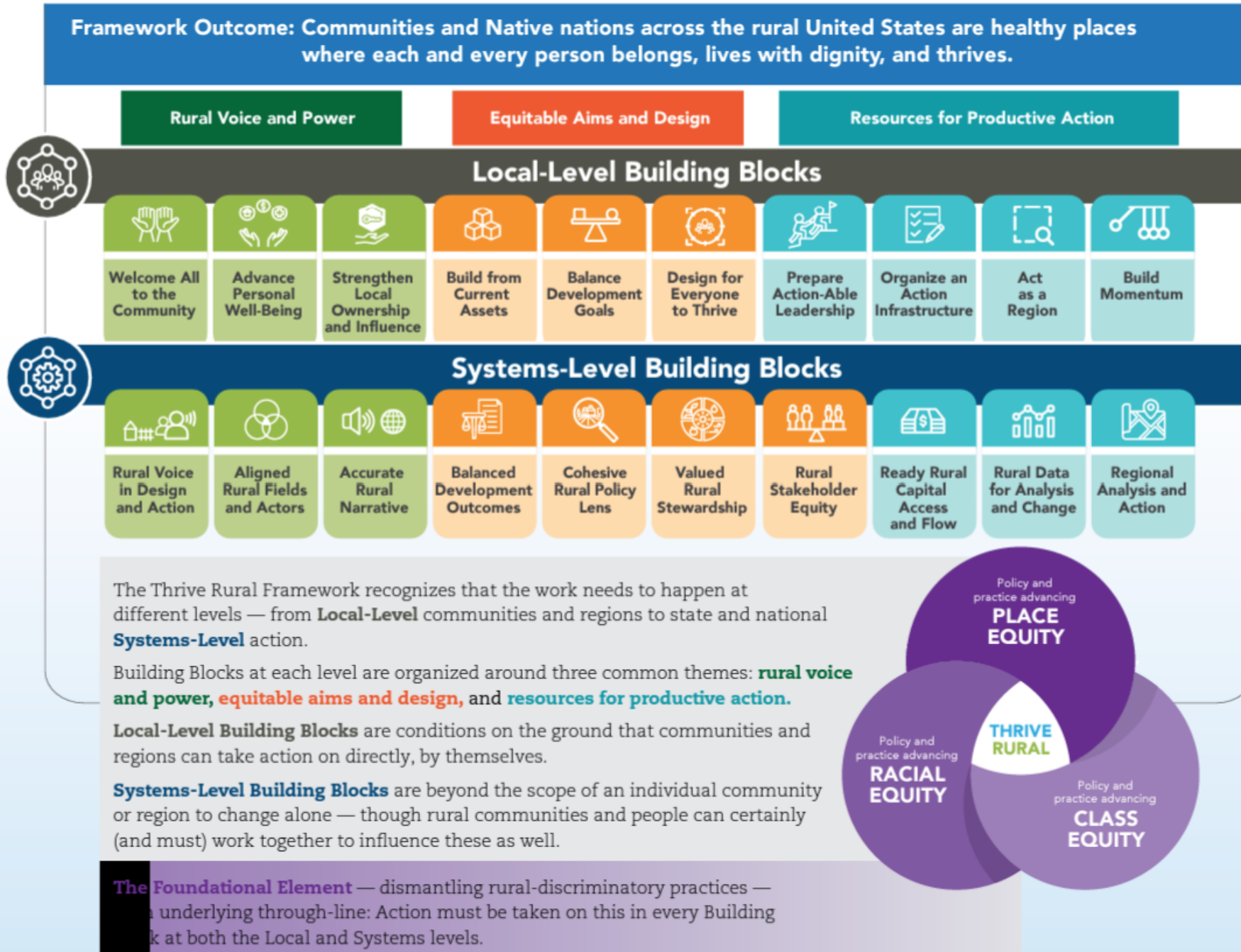
#5 SUPPORT TEAM LAUNCH, ASSESS, IMPROVE, REPEAT

- Test Operations in Real-World Conditions
 - Seek Diverse Community Feedback
 - Improve Operations, Re-Launch, Repeat
 - Assess Success, Share Learning, & Improve
- ✓ Beta-Test Launch (Small Scale)
 - ✓ Community Outreach & Focus Groups
 - ✓ Re-Engage Content-Experts on Feedback
 - ✓ Coalition & Subcommittee Strategy Sessions





THRIVE RURAL FRAMEWORK



Community Strategies Group

Community
Strategies Group
aspen institute

**LATINOS
& SOCIETY**
aspen institute

**FINANCIAL
SECURITY
PROGRAM**
aspen institute



**ENERGY &
ENVIRONMENT**
aspen institute

ascend
aspen institute

**ECONOMIC
OPPORTUNITIES
PROGRAM**
THE ASPEN INSTITUTE

Economic Vitality

Community-Generated
Aspen Institute Supported



COLORADO RIVER VALLEY Economic Development Partnership

 **COLORADO**
Center of Excellence for Advanced
Technology Aerial Firefighting
Division of Fire Prevention & Control

AGNC
ASSOCIATED GOVERNMENTS
OF NORTHWEST COLORADO

RREDC
RIFLE REGIONAL

 **COLORADO**
MOUNTAIN COLLEGE

 *Garfield County*

 **COLORADO**
Office of Economic Development
& International Trade

 **RIFLE**
GARFIELD COUNTY
AIRPORT


GARFIELD COUNTY
LIBRARIES


COLORADO
WORKFORCE
CENTER

 **TOWN OF
PARACHUTE**
BATTLEMENT MESA

 **COLORADO**
Department of
Labor and Employment

 **Colorado
Northwestern**
Community College

 **COLORADO**
Resiliency Office
Department of Local Affairs

 **Colorado
SBDC**
NORTHWEST COLORADO Small Business Development Center

 **COLORADO RIVER
VALLEY CHAMBER**

 **EDCC**
ECONOMIC DEVELOPMENT COUNCIL OF COLORADO

 *The City of
Rifle, COLORADO*

 **COLORADO**
Energy Office

 **Colorado River BOCES**

 **SMALL BUSINESS
MAJORITY**

 **Habitat
for Humanity**
Roaring Fork Valley

 **chfa**

 **TOWN OF
SILT**

 **NEW CASTLE**
AUTHENTICALLY COLORADO





Parachute • Battlement Mesa • Rifle • Silt • New Castle • Garfield County

Mission

Better Jobs Closer to Home

Vision

Healthy Communities, Economic Prosperity & Upward Mobility for All



A NEW VISION OF ECONOMIC PROSPERITY FOR THE NEXT 40 YEARS...

The Colorado River Valley Economic Development Partnership (CRVEDP) is a coalition of regional stakeholders dedicated to building community, upward mobility and regional prosperity throughout West Garfield County.

Working closely with state agencies, municipal and county government, higher learning institutions, and public and private partners across the region – our work is focused on cultivating an affordable and innovative economic landscape ideal for good-paying jobs, entrepreneurial ecosystems, workforce training, outdoor recreation, sustainable food systems, affordable housing, quality healthcare, social services, biodiversity, multi-cultural belonging, and opportunities for upward mobility for all West Garfield County residents.



A Region Primed for Strategic Economic Development

Specialized Pro Military & Fire Training

Military Pararescue & HALO Training



Wildland Firefighter Training



Aviation Firefighter Pilot Training

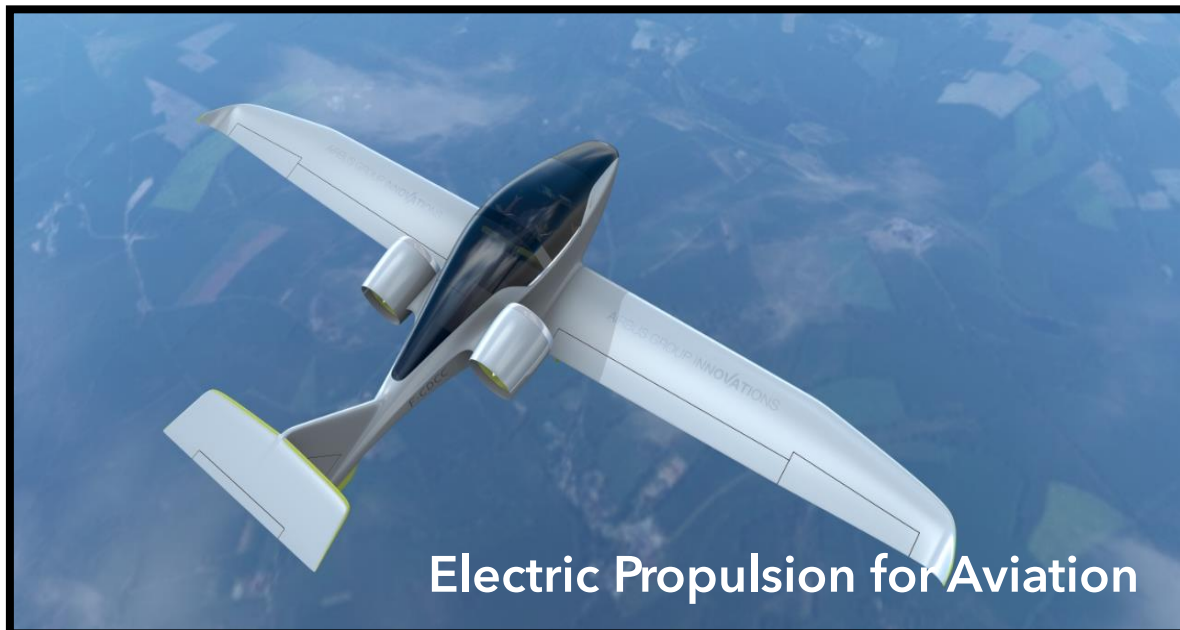


Civilian Applications

Aviation Training & Tourism



Next Gen Tech Research & Development



Complimentary Future Industries - Today



Advanced Construction



Smart Highways



Regional Community Development

Affordable Housing. Transportation Hubs. Social Services.



Housing & Transit Hubs



Community Amenities



Workforce Training Hubs



Parachute • Battlement Mesa • Rifle • Silt • New Castle • Garfield County

CRVEDP.org